



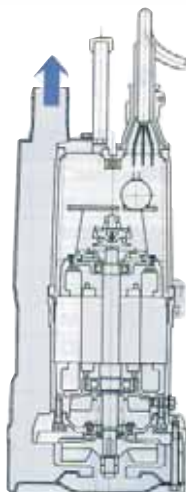
Tsurumi KTZ 400V 50Hz

Medium-duty drainage pumps - for professional use



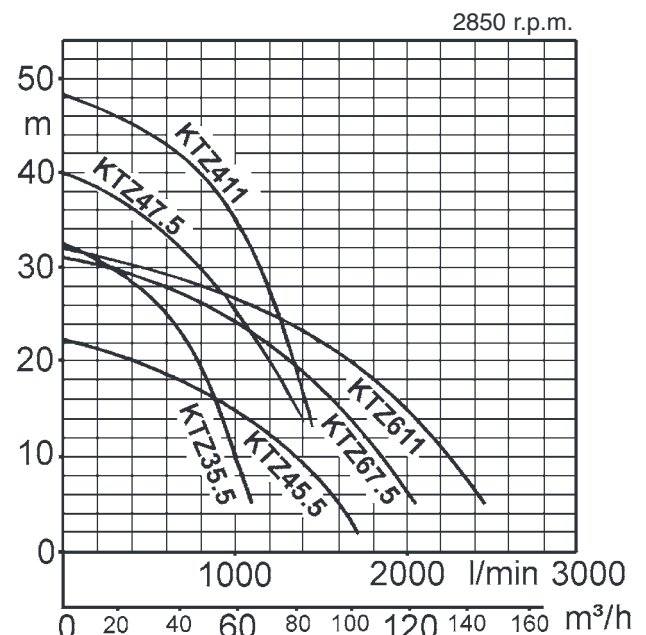
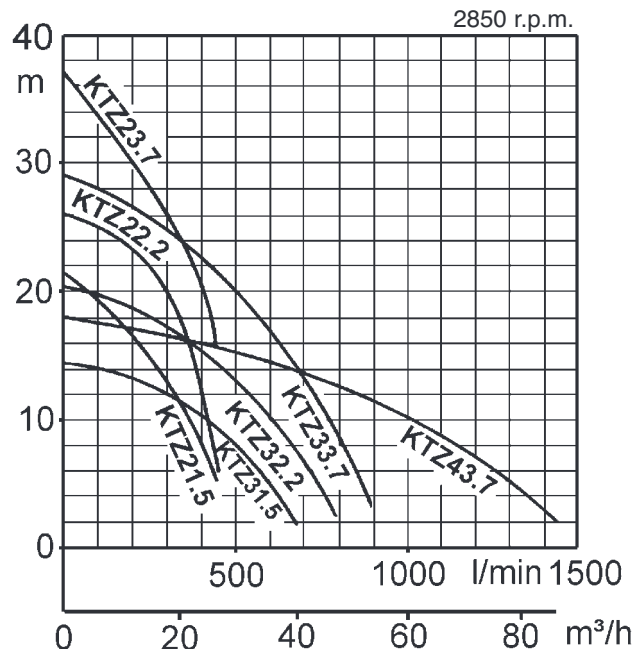
Generally applicable highgrade pump that can be used efficiently in draining in civil engineering through to deepwell applications.

Incorporating on the job requirements in the initial product design, Tsurumi has built a powerful new series of pumps to match the demands of tough drainage jobs.



Pumped water cools the motor and discharges as illustrated. The motor can be cooled even when pumping a small amount of water. The top discharge arrangement allows access into areas with space limitations.

The pump can be run continuously in air.



Rugged

By offering a cast iron pump body, our durability is increased over standard aluminium body pumps.

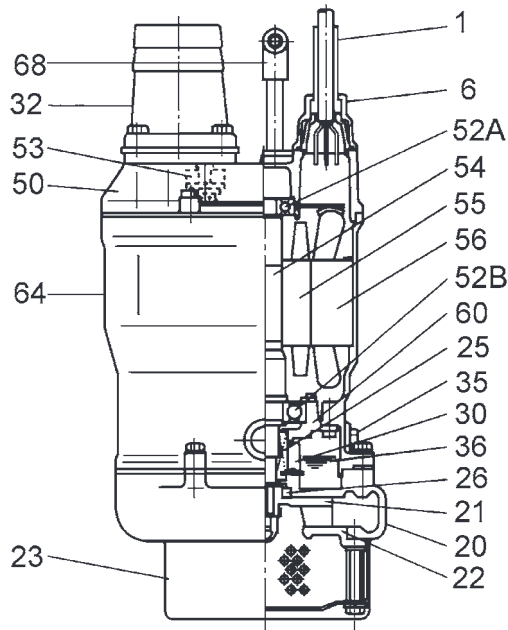
Within each motor size there is a choice between high head and high volume performance ranges.

Efficient motor cooling

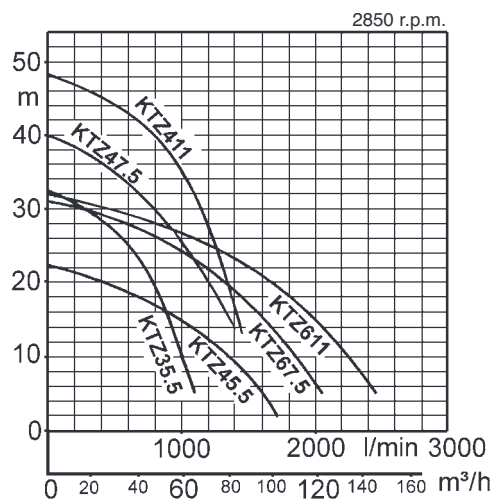
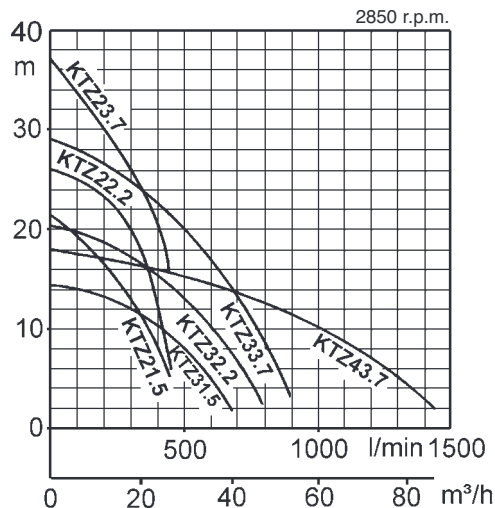
Slim line design with a top discharge offers economy of space. There is efficient motor cooling through a side flow channel.

Increased water-pressure resistance

A newly developed mechanical seal endures water pressure of up to 5 kgf/cm² (0,49MPa/cm²). This has made our KTZ submersible pumps usable at greater depth, such as in deep wells, to say nothing of use at general construction sites.



No.	Descriptions	No.	Descriptions
1	Cable	52A	Upper Bearing
6	Stuffing Box	52B	Lower Bearing
20	Pump Casing	53	Motor Protector
21	Impeller	54	Shaft
22	Suction Cover	55	Rotor
23	Strainer Stand	56	Stator
25	Mechanical Seal	60	Bearing Housing
26	Oil Seal	64	Motor Frame
30	Oil Ring	68	Handle
32	Hose Coupling		
35	Oil Plug		
36	Lubricant		
50	Motor Bracket		



Standard Accessories:

- 1 Cable 20m
- 1 Threaded flange

Specifications:

Model	Bore mm	Motor output kW	Rated current A	Head max. m	Capacity max. l/min	Dry weight kg	Max. solid handling mm	Ein-tauch-tiefe max. m
KTZ21.5-51	50	1,5	3,5	21,5	430	30	8,5	50
KTZ31.5-51	80	1,5	3,5	14,4	670	30	8,5	50
KTZ22.2-51	50	2,2	5,0	26,0	500	34	8,5	50
KTZ32.2-51	80	2,2	5,0	20,4	800	34	8,5	50
KTZ23.7-52	50	3,7	7,7	36,5	450	62,5	8,5	50
KTZ33.7-52	80	3,7	7,7	29,0	900	62,5	8,5	50
KTZ43.7-52	100	3,7	7,7	18,0	1440	62,5	8,5	50
KTZ35.5-51	80	5,5	11,4	32,0	1100	82	10	50
KTZ45.5-51	100	5,5	11,4	22,5	1750	82	10	50
KTZ47.5-51	100	7,5	15,0	40,0	1400	105	12	50
KTZ67.5-51	150	7,5	15,0	31,0	2040	107	20	50
KTZ411-51	100	11	22,0	48,5	1440	133	12	50
KTZ611-51	150	11	22,0	32,5	2440	136	20	50

Dry weight of the pump without cable

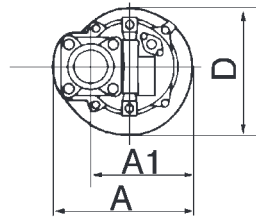
Discharge bore mm		50	80	100	150	KTZ
Pumping Fluid	Type of Fluid	Spring water, Rain water, Ground water, Sand carrying water				
	Liquid Temperature	0 - 40°C				
Pump	Components	Impeller	Open type			
		Shaft Seal	Double mechanical seal			
		Bearing	Shielded ball bearings			
	Material	Impeller	Chromium iron casting			
		Casing	Grey iron casting			
Suction Cover		Ductile iron casting				
Shaft Seal (mechanical Seal)	Silicon carbide in oil bath					
Motor	Type, Poles	Dry-type submersible induction motor, 2 poles				
	Insulation	Insulation class F				
	Phase / Voltage	3-phase / 400V / direct on line				
	Motor Protector (built-in)	Circle thermal cut-out				
	Lubricant	Turbine oil (ISO VG32)				
	Material	Frame	Grey iron casting			
Shaft		Stainless steel EN-X30Cr13				
Cable		Rubber, H07RN-F				
Discharge Connection		Threaded flange				



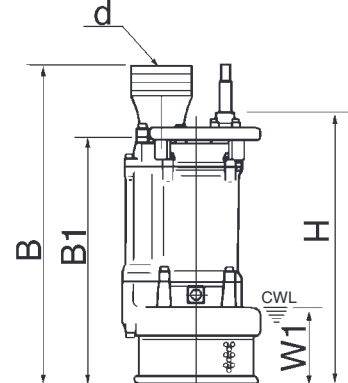
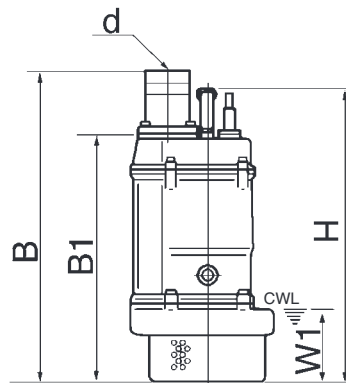
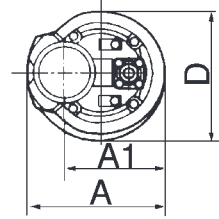
Cast Iron	Brinell hardness
Chromium Cast Iron HiCrFC	415 - 425
GG15 / EN-GJL-150	125 - 205
GG20 / EN-GJL-200	150 - 230
GGG50 / EN-GJS-500-7	150 - 220



1,5kW - 5,5kW



7,5kW - 11kW



CWL: continuous running water level

Dimensions: in mm

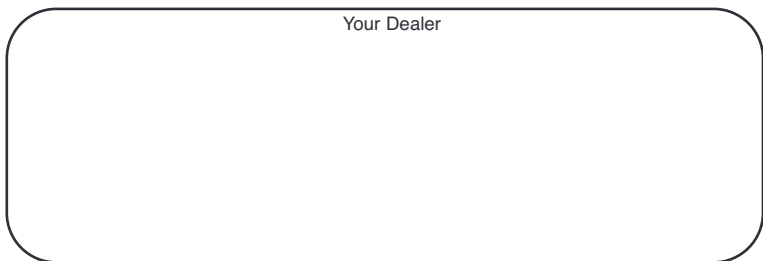
Model	A	A1	B	B1	D	H	W1
KTZ21.5-51	235	173	509	401	216	478	120
KTZ31.5-51	235	173	509	401	216	478	120
KTZ22.2-51	235	173	529	421	216	498	120
KTZ32.2-51	235	173	529	421	216	498	120
KTZ23.7-52	283	208	627	504	252	637	150
KTZ33.7-52	283	208	627	504	252	637	150
KTZ43.7-52	283	208	642	504	252	637	150
KTZ35.5-51	306	218	671	548	259	688	150
KTZ45.5-51	306	218	686	548	259	688	150
KTZ47.5-51	330	240	764	626	314	687	190
KTZ67.5-51	330	240	799	626	314	687	190
KTZ411-51	373	260	806	645	350	740	190
KTZ611-51	373	260	826	645	350	740	190



We reserve the right to change specifications and designs herein for improvement without prior notice. Our pumps are for professional use only. In the event that Tsurumi (Europe) GmbH have, in exceptional cases taken over, a manufacturer's warranty, this entitles the end-user to assert remedy free of charge against Tsurumi (Europe) GmbH due to any defect to the product occurring during the guarantee period (see below), also then when the warranty claims against the seller do not or no longer exist. In the event of malfunction, which is attributable to the improper handling by the enduser, no guarantee claim shall arise. Further claims shall not result from the warranty, unless if something to the contrary has explicitly been determined. The decision as to whether remedy is effected by way of replacement or repair shall be at the choice of Tsurumi (Europe) GmbH. The claims shall be time barred after a period of three months after expiry of the guarantee period, however, not before expiry of the warranty period which is valid towards the seller. In the event of doubt, the warranty period shall correspond with the warranty period which is valid between the end-user and his seller.

Tsurumi (Europe) GmbH

Heltorfer Straße 14
 D-40472 Düsseldorf
 Tel.: +49-211-4179373
 Fax: +49-211-4791429
 Email: sales@tsurumi-europe.com
 www.tsurumi-europe.com



Your Dealer