



Tsurumi LH 400V 50Hz

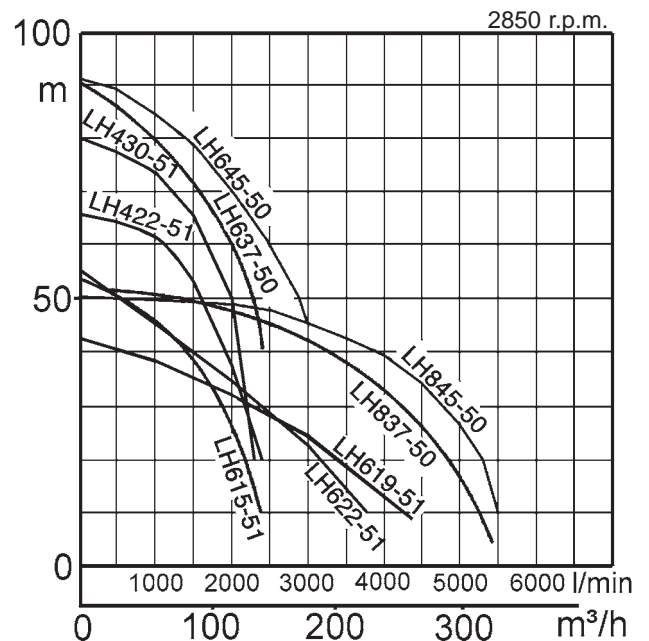
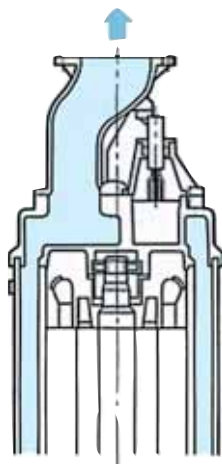
High head pumps - Deep well draining - for professional use



The recent developments of civil engineering and architectural technologies are increasing the necessity of digging deeper into the earth.

This requires a submersible pump with a rugged construction that can withstand the high pressure so deep in the water.

TSURUMI deep-well pumps: the result of our in-depth studies of the pumping science.



Pumped water cools the motor and discharges as illustrated. The motor can be cooled even when pumping a small amount of water. The centre flange arrangement allows access into areas with space limitations.

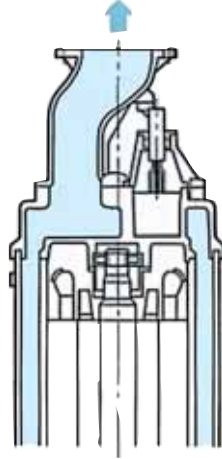
The pump can be run continuously in air.

Endurance to water pressure

Increased endurance to water pressure enables use in deeper wells. A mechanical seal withstanding water pressures of up to $5 \text{ kgfcm}^{-2}/0,49\text{MPacm}^{-2}$ is used.

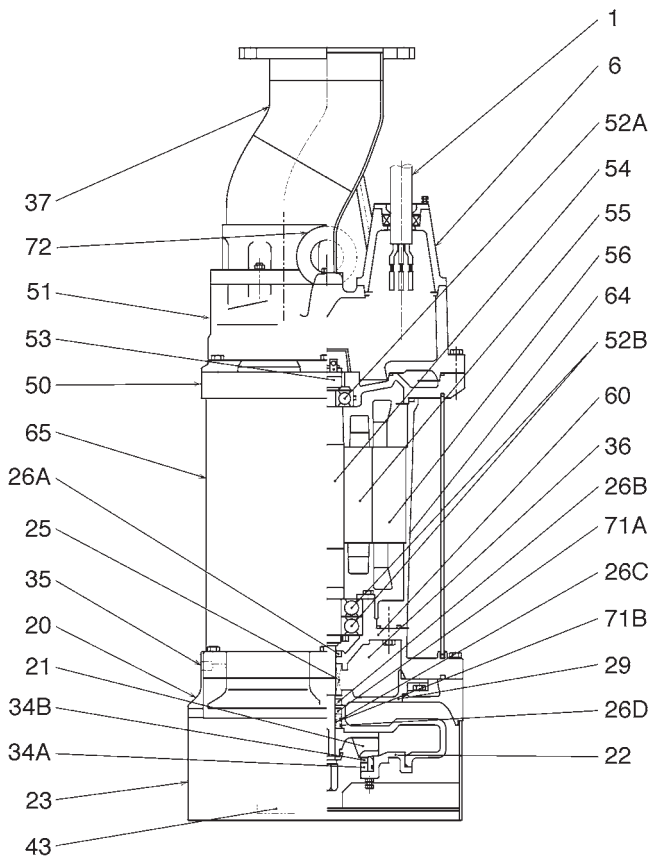
Cylindrical channel

The cylindrical drive channel maintains the motor cooling efficiency adequately even during operation at low water levels. With a top discharge, centered on the unit, the pump can be installed in narrow places.

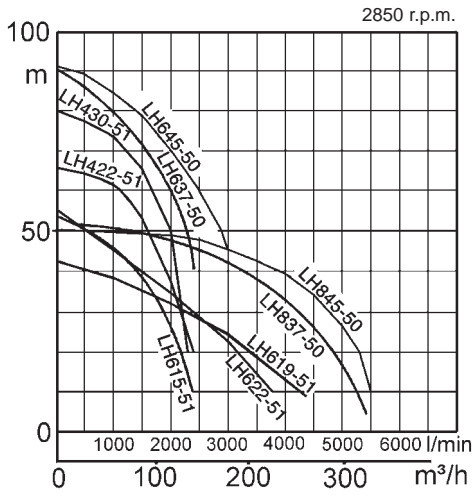


Center-flange construction

Enables the pump to be lifted up/down without disconnecting it from piping and stable installed true to the centre of gravity.



No.	Descriptions	No.	Descriptions
1	Cabtyre Cable	37	Discharge Pipe
6	Stuffing Box	43	Cathodic Protection Plate
20	Pump Casing	50	Motor Bracket
21	Impeller	51	Head Cover
22	Suction Cover	52A	Upper Bearing
23	Strainer Stand	52B	Lower Bearing
25	Mechanical Seal	53	Motor Protector
26A	Oil Seal	54	Shaft
26B	Oil Seal	55	Rotor
26C	Oil Seal	56	Stator
26D	Labyrinth Ring	60	Bearing Housing
29	Oil Casing	64	Motor Frame
34A	Suction Mouth	65	Outer Cover
34B	Mouth Ring	71A	Upper Shaft Sleeve
35	Oil Plug	71B	Lower Shaft Sleeve
36	Lubricant	72	Eyebolt



Standard Accessories:

- 1 Cable 20m
- 1 Discharge Pipe (JIS10K flange)

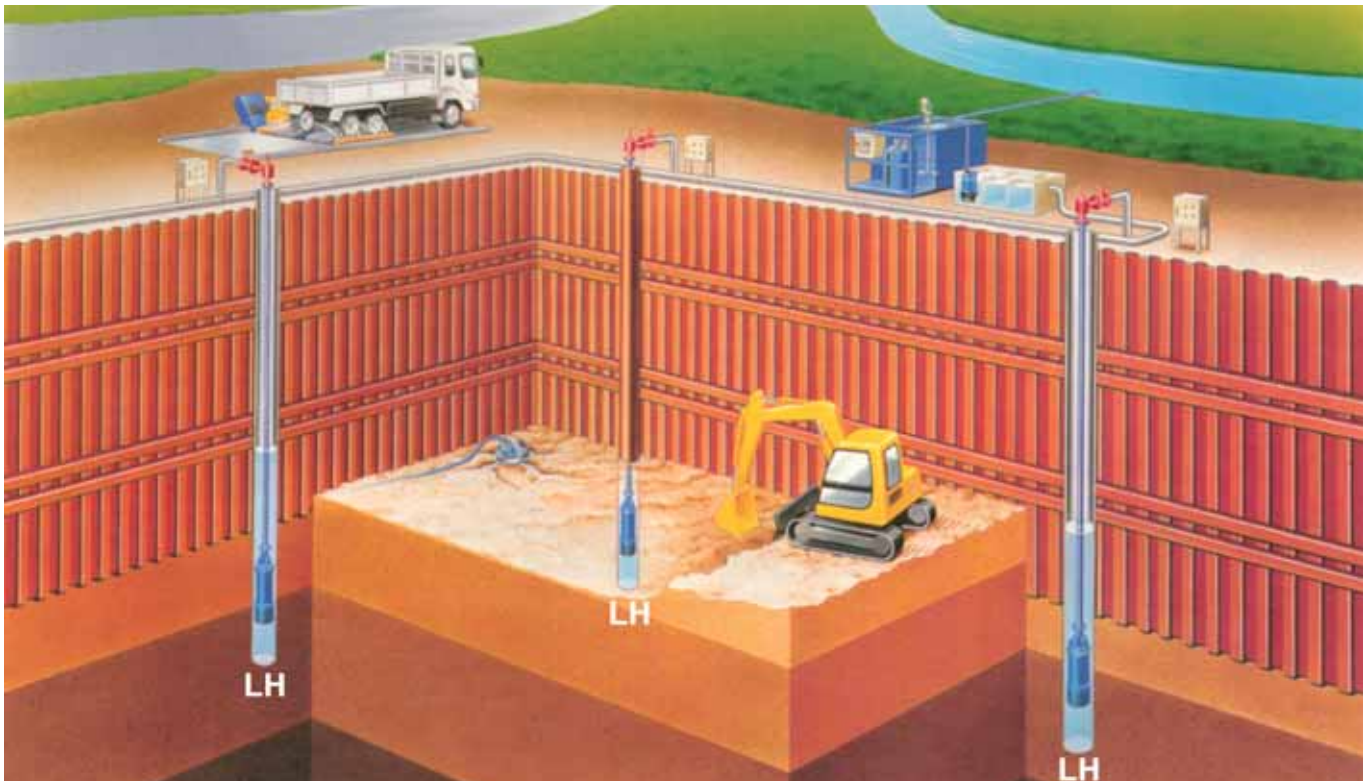
Cast Iron	Brinell hardness
Chromium Cast Iron HiCrFC	415 - 425
FC200 / EN-GJL-200	150 - 230
FCD450 / EN-GJS-450-10	143 - 217

Specifications:

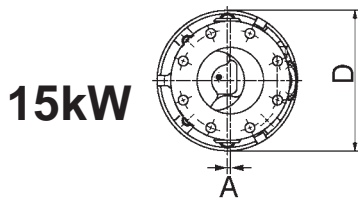
Model	Bore mm	Motor output kW	Rated current A	Head max. m	Capacity max. l/min	Dry weight kg	Max. solid handling mm	Max. water depth m
LH615-51	150	15	27,5	52,0	2400	213	8,5	50
LH619-51	150	19	36,0	42,0	4370	350	12	50
LH422-51	100	22	40,5	66,0	2400	350	6	50
LH622-51	150	22	40,5	54,0	3750	360	12	50
LH430-51	100	30	55,0	80,0	2300	355	6	50
LH637-50	150	37	67,0	89,5	2380	495	6	50
LH837-50	200	37	67,0	51,8	5375	495	20	50
LH645-50	150	45	81,0	90,0	2975	510	6	50
LH845-50	200	45	81,0	50,9	5450	510	20	50

Dry weight of the pump without cable

		Discharge bore mm			LH
		100	150	200	
Pumping Fluid	Type of Fluid	Rain water, Ground water, Sand carrying water			
	Liquid Temperature	0 - 40°C			
Pump	Components	Impeller	Closed type		
		Shaft Seal	Double mechanical seal		
		Bearings	Shielded ball bearings		
	Material	Impeller	Chromium iron casting		
		Casing	Ductile iron casting		
		Mouth Ring	Chromium iron casting		
Shaft Seal (mechanical Seal)	Silicon carbide in oil bath				
Motor	Type, Poles	Dry-type submersible induction motor, 2 poles			
	Insulation	Insulation class B (15-22kW) Insulation class F (30-45kW)			
	Phase / Voltage	3-phase / 400V / d.o.l. (15-22kW) / s.d. (30-45kW)			
	Motor Protector (built-in)	Circle thermal cut-out (15-22kW) Miniature protector (30-45kW)			
	Lubricant	Turbine oil (ISO VG32)			
	Material	Frame	Grey iron casting		
Shaft		Stainless steel EN-X30Cr13			
Cable		Rubber, H07RN-F			
Discharge Connection		JIS10K Flange			



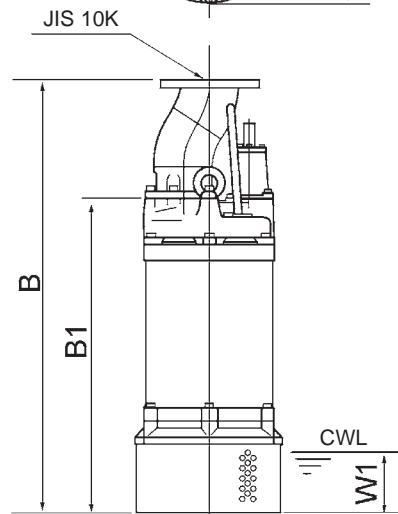
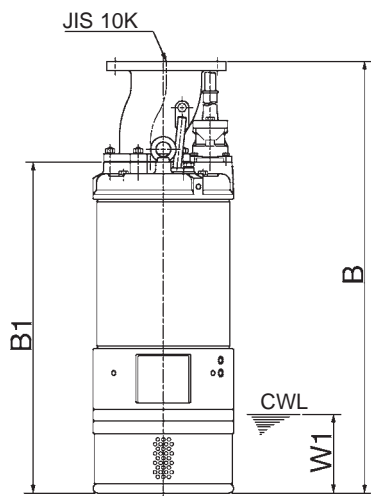
In the event of abrasive and corrosive utilization, stronger wear and tear will take place naturally in certain components. In this regard, please pay attention to our website www.tsurumi-europe.com/english/applications.htm.



15kW



19-45kW



C.W.L.: continuous running water Level

Dimensions: Unit mm

Model	d	A	B	B1	D	W1
LH615-51	150	7	1014	777	330	185
LH619-51	150	--	1423	1072	420	270
LH622-51	150	--	1423	1072	420	270
LH422-51	100	--	1352	1051	420	250
LH430-51	100	--	1352	1051	420	250
LH637-50	150	--	1448	1027	530	180
LH837-50	200	--	1488	1027	530	180
LH645-50	150	--	1448	1027	530	180
LH845-50	200	--	1488	1027	530	180



We reserve the right to change specifications and designs herein for improvement without prior notice. Our pumps are for professional use only. In the event that Tsurumi (Europe) GmbH have, in exceptional cases taken over, a manufacturer's warranty, this entitles the end-user to assert remedy free of charge against Tsurumi (Europe) GmbH due to any defect to the product occurring during the guarantee period (see below), also then when the warranty claims against the seller do not or no longer exist. In the event of malfunction, which is attributable to the improper handling by the enduser, no guarantee claim shall arise. Further claims shall not result from the warranty, unless if something to the contrary has explicitly been determined. The decision as to whether remedy is effected by way of replacement or repair shall be at the choice of Tsurumi (Europe) GmbH. The claims shall be time barred after a period of three months after expiry of the guarantee period, however, not before expiry of the warranty period which is valid towards the seller. In the event of doubt, the warranty period shall correspond with the warranty period which is valid between the end-user and his seller.

Tsurumi (Europe) GmbH

Heltorfer Straße 14
 D-40472 Düsseldorf
 Tel.: +49-211-4179373
 Fax: +49-211-4791429
 Email: sales@tsurumi-europe.com
 www.tsurumi-europe.com

