



# Tsurumi Agitator Pumps

400V  
50Hz

Sand and slurry pumps with agitator - for professional use

KTV



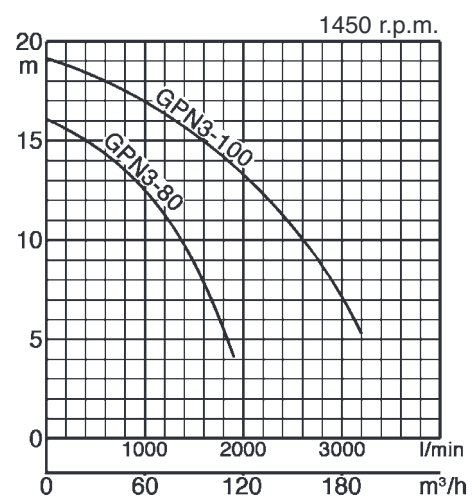
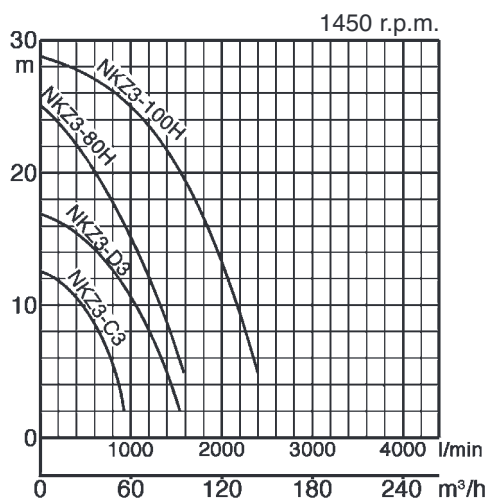
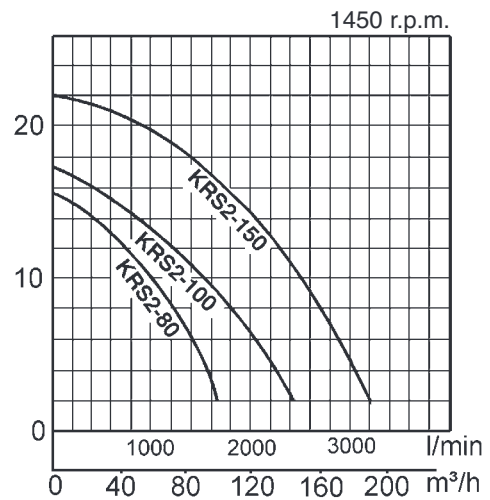
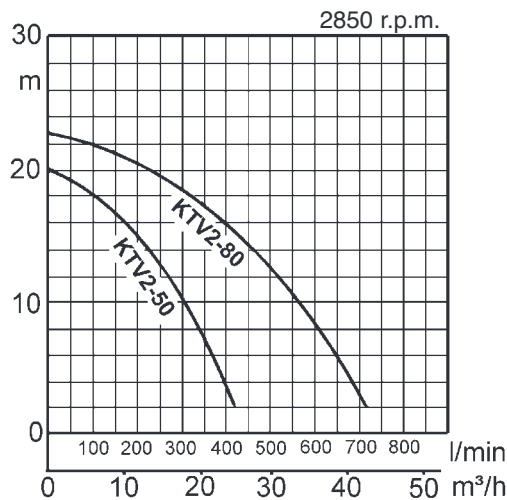
KRS



GPN

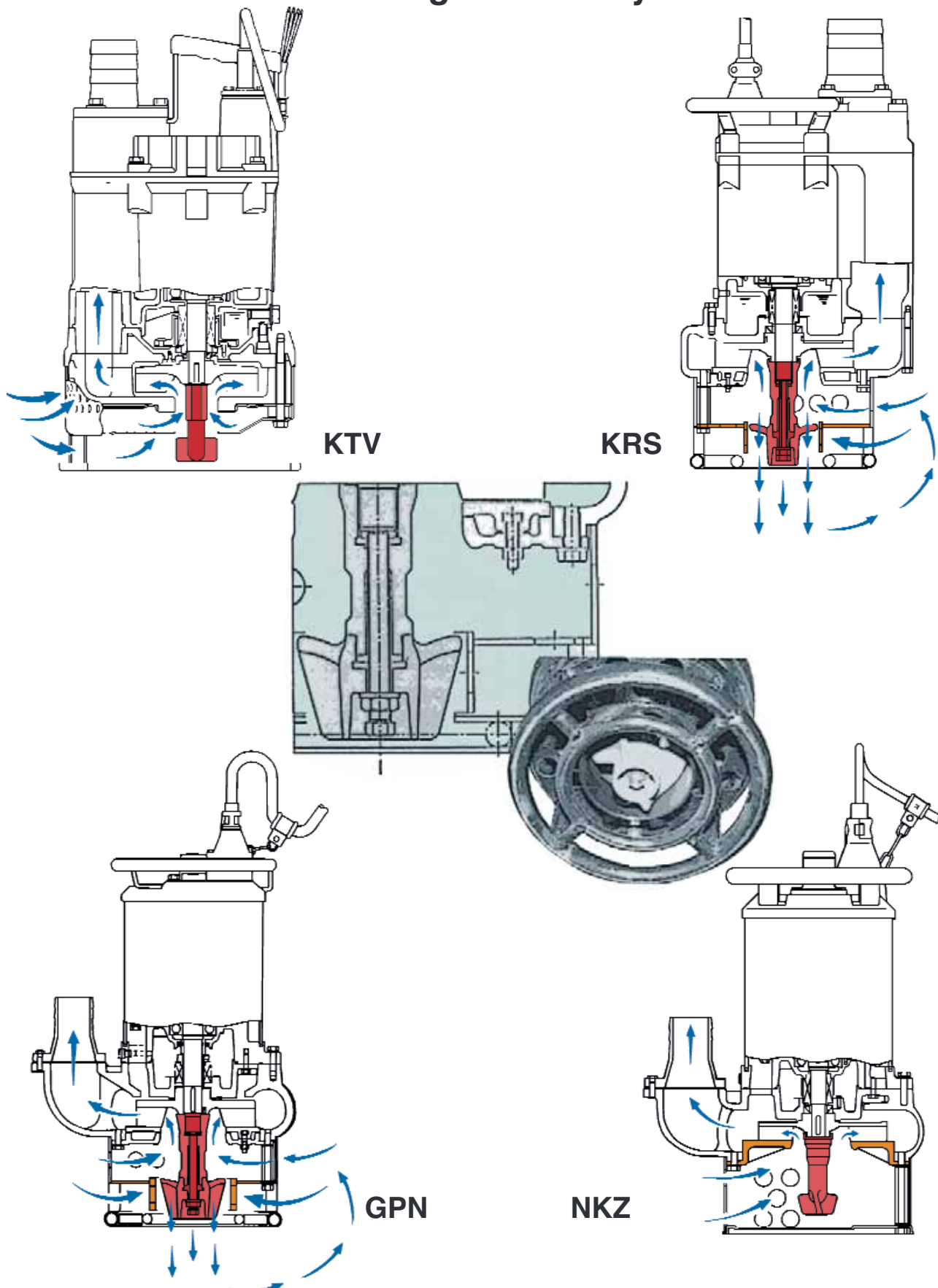


NKZ



# Forced Agitation

The agitator installed on the motor shaft extension forcibly agitates the fluid for easy and efficient transmission of sludge and slurry



# KTV

A powerful slurry pump using KTV pumps as a base. Features high wear resistance, durability and extra light weight.



- Special alloy rubber used for casing, high-chrome cast iron used for impeller
- High-gap structure impeller used. Features little obstruction
- Easy maintenance (Lower pump section can be dismantled by single box wrench)
- Top discharge structure, side flow system demonstrates space savings and efficient motor cooling

# KRS

Tsurumi's typical slurry pumps with a 4-pole motor for an increased lifetime and greater convenience.



- Slurry pump suitable for most demanding jobs
- 4-pole motor used to achieve a simple structure that demonstrates excellent durability and versatility
- By offering a cast iron pump body durability is increased over standard aluminium body pumps
- Top discharge structure, side flow system demonstrates space savings and efficient motor cooling

# GPN

A special-steel impeller and suction plate have greatly increased the pump's life. The casing is designed to have wide passing area, thorough thickness and anti-abrasion material.



- High power sand pump
- 4-pole motor used to achieve a simple structure that demonstrates excellent durability and versatility
- By offering a cast iron pump body durability is increased over standard aluminium body pumps
- Spiral structure, marvelously facilitates the passage of sand, soil, sludge, or slime - without clogging.

# NKZ

All pumps in this series provide very smooth passage of sandy earth and slime. A forcibly cooled motor ensures long and continuous pump operations exposed to the air.



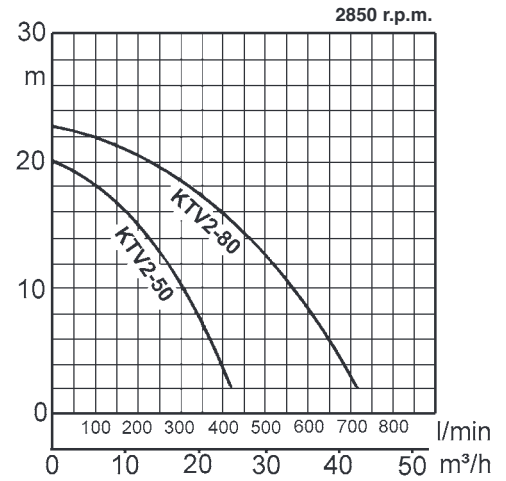
- All purpose sand pump
- 4-pole motor used to achieve a simple structure that demonstrates excellent durability and versatility
- By offering a cast iron pump body durability is increased over standard aluminium body pumps
- Spiral structure, marvelously facilitates the passage of sand, soil, sludge, or slime - without clogging.

# KTV 400V 50Hz

## Standard Accessories:

- 1 Cable 20m
- 1 Threaded flange
- 1 Agitator

Discharge bore mm		50	80	KTV
Pumping Fluid	Type of Fluid	Sludge, Slurry, Liquids containing mud		
	Liquid Temperature	0 - 40°C		
Pump	Components	Impeller	Semi-vortex type	
		Shaft Seal	Double mechanical seal	
		Bearing	Shielded ball bearings	
	Material	Impeller	Chromium iron casting	
		Casing	Synthetic rubber	
Shaft Seal (mechanical Seal)	Silicon carbide in oil bath			
Motor	Type, Poles	Dry-type submersible induction motor, 2 poles		
	Insulation	Insulation class E		
	Phase / Voltage	3-phase / 400V / direct on line		
	Motor Protector (built-in)	Circle thermal cut-out		
	Lubricant	Turbine oil (ISO VG32)		
	Material	Frame	Aluminium alloy casting	
Shaft		Stainless steel EN-X6Cr13		
Cable		Rubber, H07RN-F		
Discharge Connection		Threaded flange		



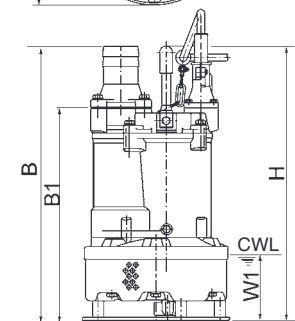
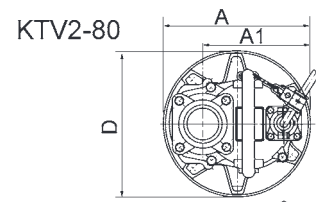
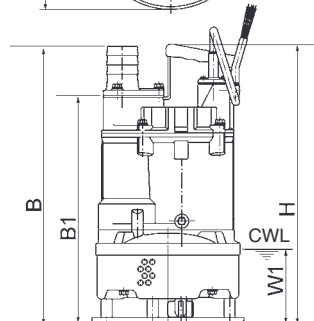
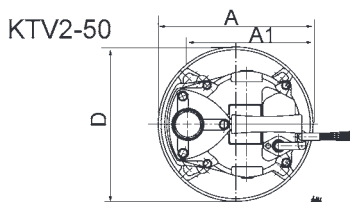
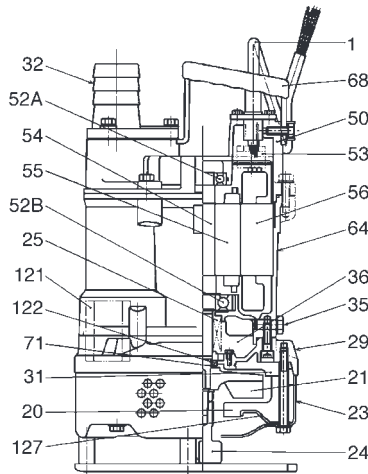
Pumped water cools the motor and discharges as illustrated. The motor can be cooled even when pumping a small amount of water. The top discharge arrangement allows access into areas with space limitations. The pump can be run continuously in air.

Cast Iron:	Brinell Hardness
Chromium Cast Iron HiCrFC	415 - 425

## Specifications:

Model	Bore mm	Motor output kW	Rated current A	Head max. m	Capacity max. l/min	Dry weight kg	Max. solid handling mm	Max. water depth m
KTV2-50	50	2	3,8	20,0	420	24,5	10	50
KTV2-80	80	3	6,1	22,5	720	37,5	10	50

Dry weight of the pump without cable



CWL: continuous running water level

CWL: continuous running water level

No.	Descriptions	No.	Descriptions
1	Cable	52B	Lower Bearing
20	Pump Casing	53	Motor Protector
21	Impeller	54	Shaft
23	Strainer Stand	55	Rotor
24	Forced Agitation	56	Stator
25	Mechanical Seal	64	Motor Frame
29	Oil Casing	68	Handle
31	Wearing Plate	71	Shaft Sleeve
32	Hose Coupling	121	Duct Sleeve
35	Oil Plug	122	V-ring
36	Lubricant	127	Fittings
50	Motor Bracket		
52A	Upper Bearing		

## Dimensions:

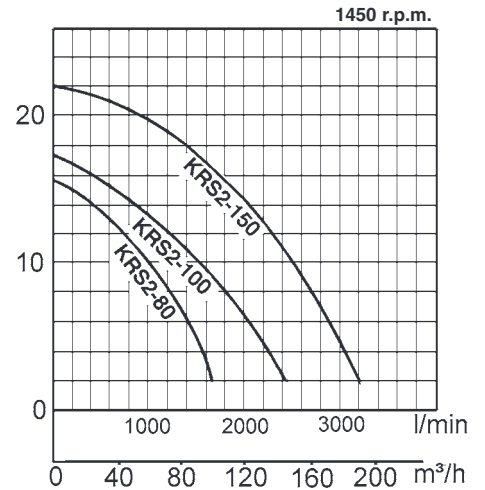
Model	A	A1	B	B1	D	H	W1
KTV2-50	250	192	450	368	250	454	120
KTV2-80	295	216	550	427	295	550	130

# KRS 400V 50Hz

## Standard Accessories:

- 1 Cable 20m
- 1 Hose coupling
- 1 Agitator

Discharge bore mm		80	100	150	KRS
Pumping Fluid	Type of Fluid	Sludge, Slurry, Liquids containing sandy mud and bentonite			
	Liquid Temperature	0 - 40°C			
Pump	Components	Impeller	Open type		
		Shaft Seal	Double mechanical seal		
		Bearing	Shielded ball bearings		
	Material	Impeller	Chromium iron casting		
		Casing	Grey iron casting		
		Suction Plate	Chromium iron casting		
Shaft Seal (mechanical Seal)		Silicon carbide in oil bath			
Motor	Type, Poles	Dry-type submersible induction motor, 4 poles			
	Insulation	Insulation class E, B			
	Phase / Voltage	3-phase / 400V / direct on line			
	Motor Protector (built-in)	Circle thermal cut-out			
	Lubricant	Turbine oil (ISO VG32)			
	Material	Frame	Grey iron casting		
Shaft		Stainless steel EN-X30Cr13			
Cable		Rubber, H07RN-F			
Discharge Connection		Hose coupling			



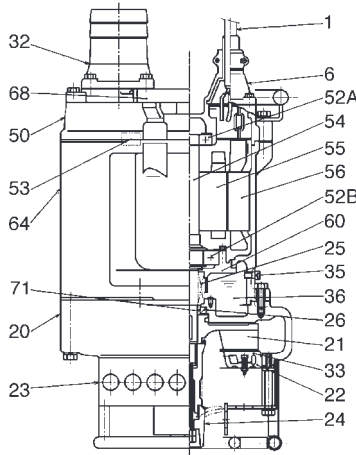
Pumped water cools the motor and discharges as illustrated. The motor can be cooled even when pumping a small amount of water. The top discharge arrangement allows access into areas with space limitations. The pump can be run continuously in air.

Cast Iron:	Brinell Hardness
Chromium Cast Iron HiCrFC	415 - 425
GG15 / EN-GJL-150	125 - 205
GG20 / EN-GJL-200	150 - 230

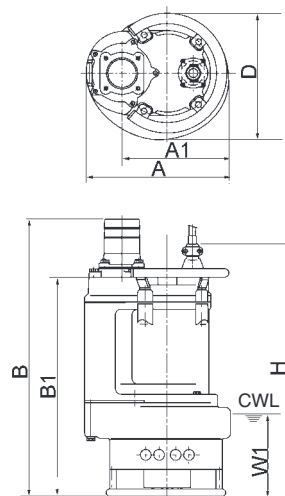
## Specifications:

Model	Bore mm	Motor output kW	Rated current A	Head max. m	Capacity max. l/min	Dry weight kg	Max. solid handling mm	Max. water depth m
KRS2-80	80	4	9,5	15,8	1670	105	30	30
KRS2-100	100	6	13,0	17,1	2350	145	30	30
KRS2-150	150	9	18,5	22,0	3250	170	30	30

Dry weight of the pump without cable



No.	Descriptions	No.	Descriptions
1	Cable	50	Motor Bracket
6	Stuffing Box	52A	Upper Bearing
20	Pump Casing	52B	Lower Bearing
21	Impeller	53	Motor Protector
22	Suction Cover	54	Shaft
23	Strainer Stand	55	Rotor
24	Forced Agitation	56	Stator
25	Mechanical Seal	60	Bearing Housing
26	Oil Seal	64	Motor Frame
32	Hose Coupling	68	Handle
33	Suction Plate	71	Shaft Sleeve
35	Oil Plug		
36	Lubricant		



CWL: continuous running water level

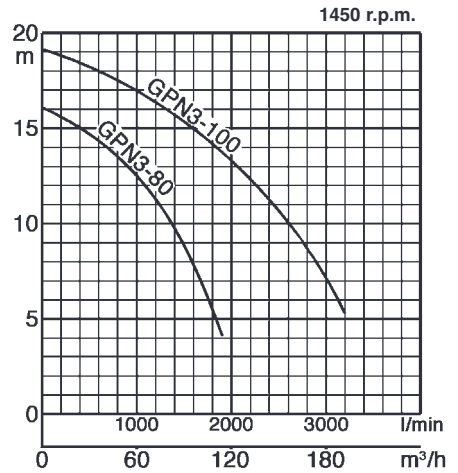
## Dimensions:

Model	A	A1	B	B1	D	H	W1
KRS2-80	350	260	786	666	326	766	250
KRS2-100	415	305	815	678	373	754	250
KRS2-150	434	324	879	699	407	811	250

# GPN 400V 50Hz

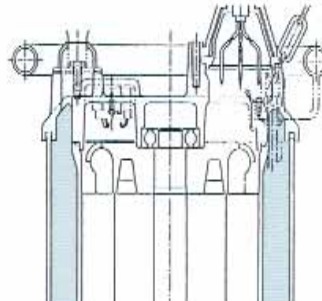
## Standard Accessories:

- 1 Cable 20m
- 1 Hose coupling
- 1 Agitator



Discharge bore mm		80	100	GPN
Pumping Fluid	Type of Fluid	Sludge, Slurry, Liquids containing sandy mud		
	Liquid Temperature	0 - 40°C		
Pump	Components	Impeller	Open type	
		Shaft Seal	Double mechanical seal	
		Bearing	Shielded ball bearings	
	Material	Impeller	Chromium iron casting	
		Casing	Grey iron casting	
		Suction Plate	Chromium iron casting	
Shaft Seal (mechanical Seal)	Silicon carbide in oil bath			
Motor	Type, Poles	Dry-type submersible induction motor, 4 poles		
	Insulation	Insulation class E, B		
	Phase / Voltage	3-phase / 400V / direct on line		
	Motor Protector (built-in)	Circle thermal cut-out		
	Lubricant	Turbine oil (ISO VG32)		
	Material	Frame	Grey iron casting	
Shaft		Chromium-molybdenum steel (DIN 1.7220)		
Cable		Rubber, H07RN-F		
Discharge Connection		Hose coupling		

Forced motor cooling - a part of pumped fluid flows in between the outer cover and the motor housing before being discharged, thus cooling the motor on its way. This forced motor cooling construction assures the pump of long and continuous operations even exposed to air.

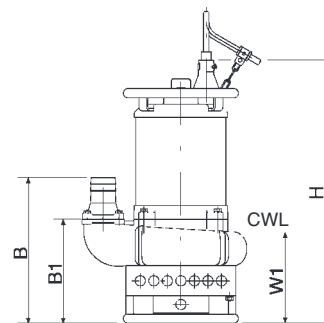
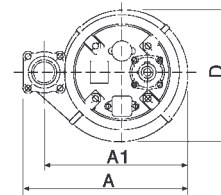
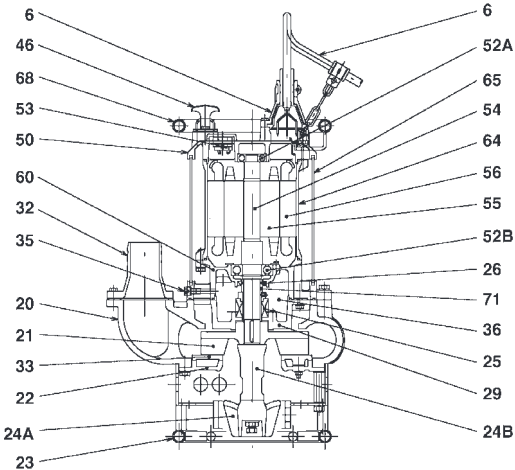


Cast Iron:	Brinell Hardness
Chromium Cast Iron HiCrFC	415 - 425
GG15 / EN-GJL-150	125 - 205
GG20 / EN-GJL-200	150 - 230

## Specifications:

Model	Bore mm	Motor output kW	Rated current A	Head max. m	Capacity max. l/min	Dry weight kg	Max. solid handling mm	Max. water depth m
GPN3-80	80	5,5	12,1	16,3	1900	145	30	50
GPN3-100	100	11	22,0	19,3	3250	220	30	50

Dry weight of the pump without cable



CWL: continuous running water level

No.	Descriptions	No.	Descriptions
1	Cable	36	Lubricant
6	Stuffing Box	50	Motor Bracket
20	Pump Casing	52A	Upper Bearing
21	Impeller	52B	Lower Bearing
22	Suction Cover	53	Motor Protector
23	Strainer Stand	54	Shaft
24	Forced Agitation	55	Rotor
25	Mechanical Seal	56	Stator
26	Oil Seal	60	Bearing Housing
29	Oil Casing	64	Motor Frame
32	Hose Coupling	68	Handle
33	Suction Plate	71	Shaft Sleeve
35	Oil Plug		

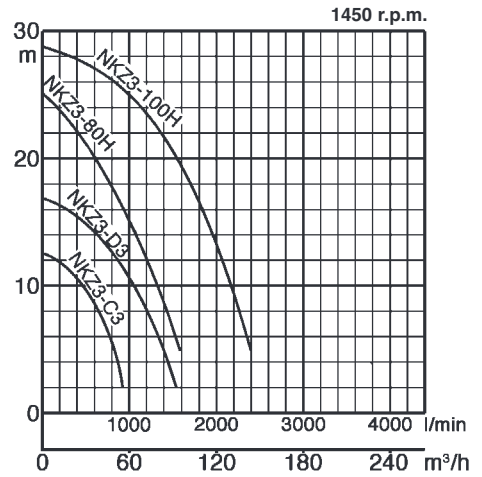
## Dimensions:

Model	A	A1	B	B1	D	H	W1
GPN3-80	487	426	429	307	390	777	270
GPN3-100	617	517	481	328	450	860	295

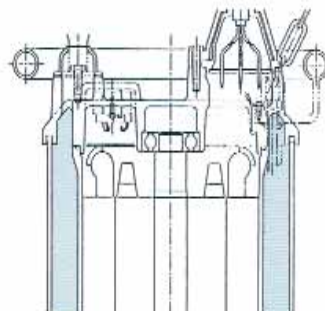
# NKZ 400V 50Hz

## Standard Accessories:

- 1 Cable 20m
- 1 Hose coupling
- 1 Agitator



Forced motor cooling - a part of pumped fluid flows in between the outer cover and the motor housing before being discharged, thus cooling the motor on its way. This forced motor cooling construction assures the pump of long and continuous operations even exposed to air.



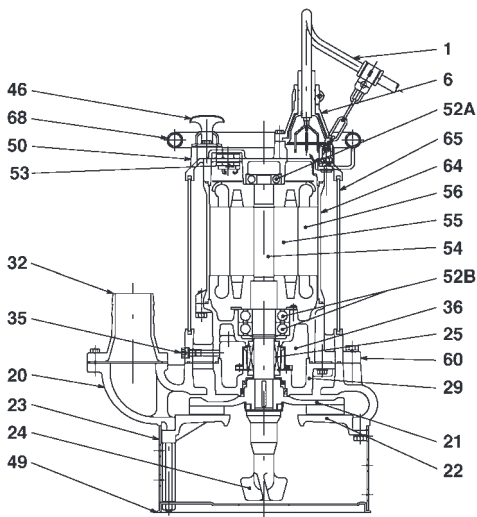
Discharge bore mm		80	100	<b>NKZ</b>
Pumping Fluid	Type of Fluid	Sludge, Slurry, Liquids containing sandy mud		
	Liquid Temperature	0 - 40°C		
Pump	Components	Impeller	Open type	
		Shaft Seal	Double mechanical seal	
		Bearing	Shielded ball bearings	
	Material	Impeller	Chromium iron casting	
		Casing	Grey iron casting	
		Suction Plate	Grey/Chromium iron casting	
		Shaft Seal (mechanical Seal)	Silicon carbide in oil bath	
Motor	Type, Poles	Dry-type submersible induction motor, 4 poles		
	Insulation	Insulation class E, B		
	Phase / Voltage	3-phase / 400V / direct on line		
	Motor Protector (built-in)	Circle thermal cut-out		
	Lubricant	Turbine oil (ISO VG32)		
	Material	Frame	Grey iron casting	
Shaft		Stainless steel EN-X30Cr13		
Cable		Rubber, H07RN-F		
Discharge Connection		Hose coupling		

Cast Iron:	Brinell Hardness
Chromium Cast Iron HiCrFC	415 - 425
GG15 / EN-GJL-150	125 - 205
GG20 / EN-GJL-200	150 - 230

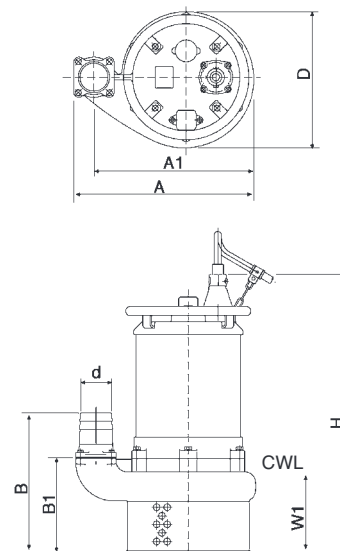
## Specifications:

Model	Bore mm	Motor output kW	Rated current A	Head max. m	Capacity max. l/min	Dry weight kg	Max. solid handling mm	Max. water depth m
NKZ3-C3	80	2,2	5,1	12,6	930	91	30	30
NKZ3-D3	80	3,7	8,0	17,0	1540	100	30	30
NKZ3-80H	80	5,5	12,1	24,9	1530	114	20	30
NKZ3-100H	100	11	22,0	28,8	2440	192	20	30

Dry weight of the pump without cable



No.	Descriptions	No.	Descriptions
1	Cable	36	Lubricant
6	Stuffing Box	50	Motor Bracket
20	Pump Casing	52A	Upper Bearing
21	Impeller	52B	Lower Bearing
22	Suction Cover	53	Motor Protector
23	Strainer Stand	54	Shaft
24	Forced Agitation	55	Rotor
25	Mechanical Seal	56	Stator
26	Oil Seal	60	Bearing Housing
29	Oil Casing	64	Motor Frame
32	Hose Coupling	68	Handle
33	Suction Plate	71	Shaft Sleeve
35	Oil Plug		



CWL: continuous running water level

## Dimensions:

Model	A	A1	B	B1	D	H	W1
NKZ3-C3	467	405	371	249	370	664	225
NKZ3-D3	467	405	371	249	370	664	225
NKZ3-80H	491	430	387	264	401	754	220
NKZ3-100H	547	486	422	284	414	841	240



We reserve the right to change specifications and designs herein for improvement without prior notice. Our pumps are for professional use only. In the event that Tsurumi (Europe) GmbH have, in exceptional cases taken over, a manufacturer's warranty, this entitles the end-user to assert remedy free of charge against Tsurumi (Europe) GmbH due to any defect to the product occurring during the guarantee period (see below), also then when the warranty claims against the seller do not or no longer exist. In the event of malfunction, which is attributable to the improper handling by the enduser, no guarantee claim shall arise. Further claims shall not result from the warranty, unless if something to the contrary has explicitly been determined. The decision as to whether remedy is effected by way of replacement or repair shall be at the choice of Tsurumi (Europe) GmbH. The claims shall be time barred after a period of three months after expiry of the guarantee period, however, not before expiry of the warranty period which is valid towards the seller. In the event of doubt, the warranty period shall correspond with the warranty period which is valid between the end-user and his seller.

## Tsurumi (Europe) GmbH

Heltorfer Straße 14  
D-40472 Düsseldorf  
Tel.: +49-211-4179373  
Fax: +49-211-4791429  
Email: [sales@tsurumi-europe.com](mailto:sales@tsurumi-europe.com)  
[www.tsurumi-europe.com](http://www.tsurumi-europe.com)

Your Dealer