
FEKABOX 100

FITTED FOR
FEKA 600 MA
FEKA VS 550-750 M-A
FEKA VX 550-750 M-A



GENERAL DATA

Applications

Automatic collection and lifting system, ideal for collecting and pumping black water and domestic/industrial waste from basements located under the level of the drains into sewers.

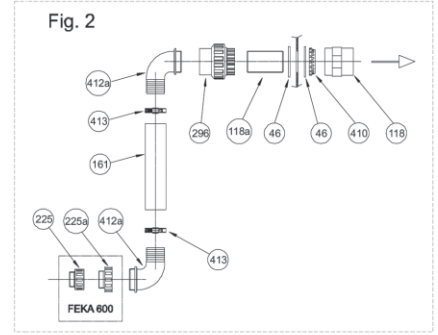
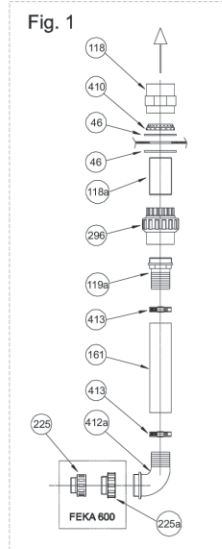
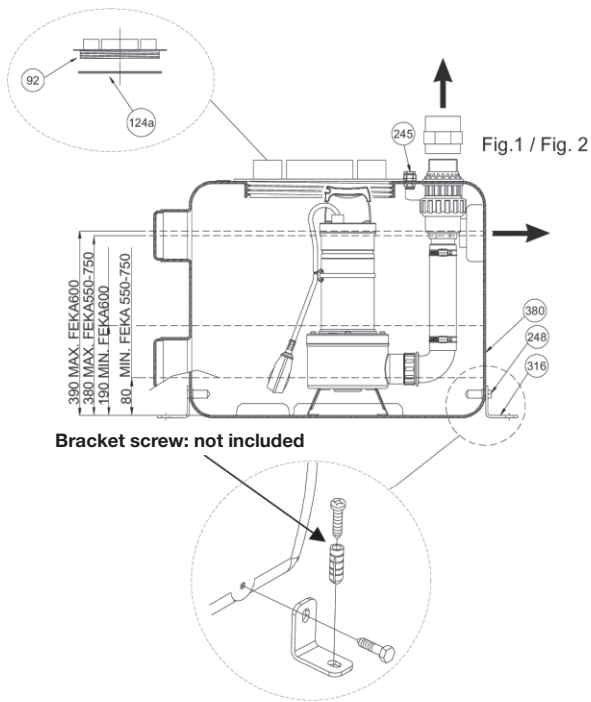
Pumped liquid

Phreatic water, rain water, clear waste water, black waste water and water from rivers and lakes.

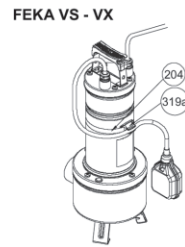
TECHNICAL DATA

FEKABOX 100 comprises a high density polyethylene tank with an effective capacity of 100 litres, supplied with tank cover and technopolymer gasket. Fitted for operation with one automatic electric pump FEKA 600- FEKA VS - FEKA VX **to be ordered separately.**

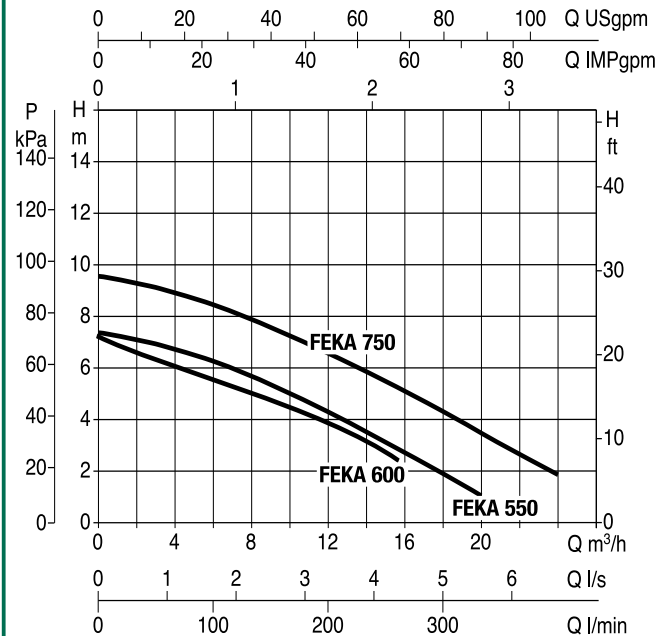
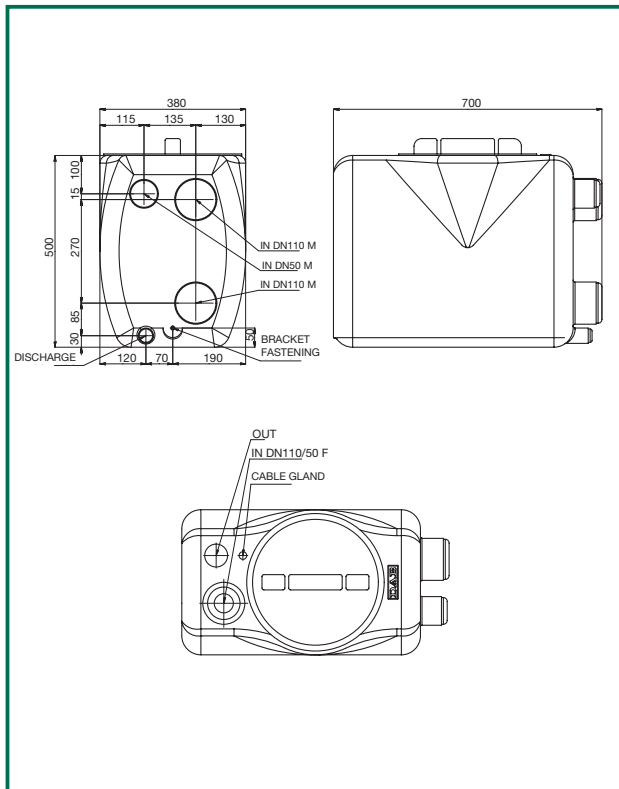
- Material: 5 mm thick propylene
- Tank inlet: DN50 - DN100 (male/female)
- Tank outlet: DN50 - 2" GAS (vertical or horizontal)
- Discharge: DN40
- Max liquid temperature: +50°C
- Supplied with anti floatation device (EN 12050-1 standard)



46	GASKET 78X58X4 (2")
92	TANK COVER
118	SLEEVE 63X2"
118a	BAR WITH THREADED HOLES 2"X100
119a	RUBBER HOLDER
124a	GASKET COVER
161	RUBBER PIPE 57X50 L=240
204	CABLE CLAMP
225	ADAPTER M-F 1 1/4" - 1 1/2"
225a	ADAPTER M-F 1 1/2" - 2"
245	CABLE GLAND M20X1,5
248	TE SCREW 10X40
296	UNION 3 pcs WITH O-RING
316	FASTENING BRACKET
319a	CABLE HOLDER
380	TANK
410	COLLAR 2" PP OR PVC
412a	BENT HOSE ADAPTER
413	TUBE CLAMP Ø57



The performance curves are based on the kinematic viscosity values = 1 mm²/s and density equal to 1000 kg/m³. Curve tolerance according to ISO 9906.



MODEL	A	B	C	D	E	F	G	H	H1	H2	H3	H4	H5	I	WEIGHT Kg
FEKABOX 100	700	190	70	120	380	115	135	270	100	15	85	30	50	130	8,5