

---

# FEKABOX 280

FITTED FOR  
FEKA 600 MA  
FEKA VS 550-750 M-A  
FEKA VX 550-750 M-A



---

## GENERAL DATA

### Applications

Automatic collection and lifting system, ideal for collecting and pumping black water and domestic/industrial waste from basements located under the level of the drains into sewers.

### Pumped liquid

Phreatic water, rain water, clear waste water, black waste water and water from rivers and lakes.

### Technical features

FEKABOX 280 comprises a high density polyethylene tank with an effective capacity of 280 litres, with a sturdy gas and liquid proof sealed cover, a DSD-2 device complete with support, a slide, hose bracket and chute hoses, and pipe fittings for connecting the pump to the drains.

Complete with: special cable holder, DN50 and DN110 suction manifolds and 2" delivery manifolds.

Complete with connector for DN50 vent tube. An alarm float can be used on request.

Fitted for operation with one automatic electric pump (see models in graph) **to be ordered separately**.

For use with VS or VX electric pump, the bracket for the DSD2 device must be ordered separately .

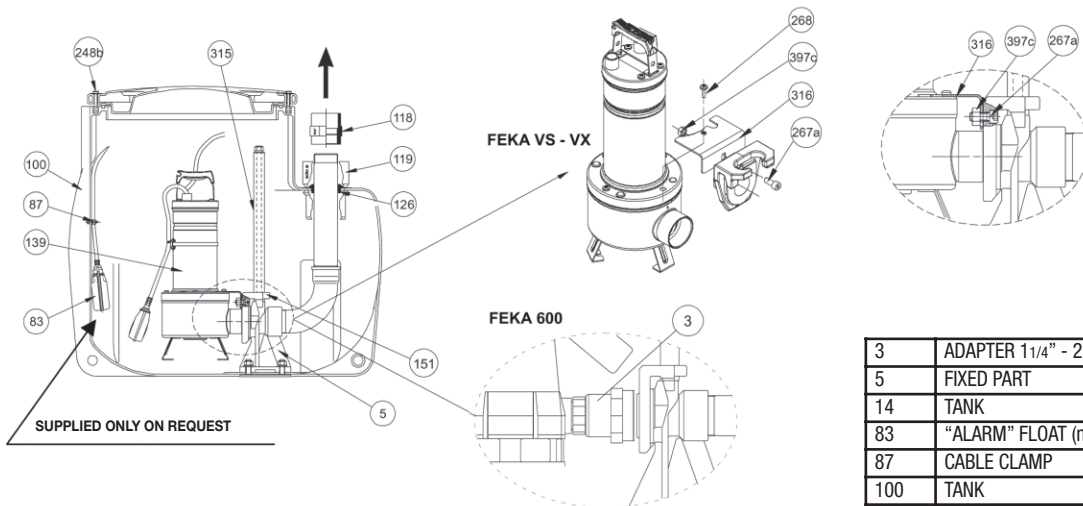
### Supply

The station is supplied on a pallet wrapped in a tough cardboard pack, complete with an installation and maintenance instructions sheet.

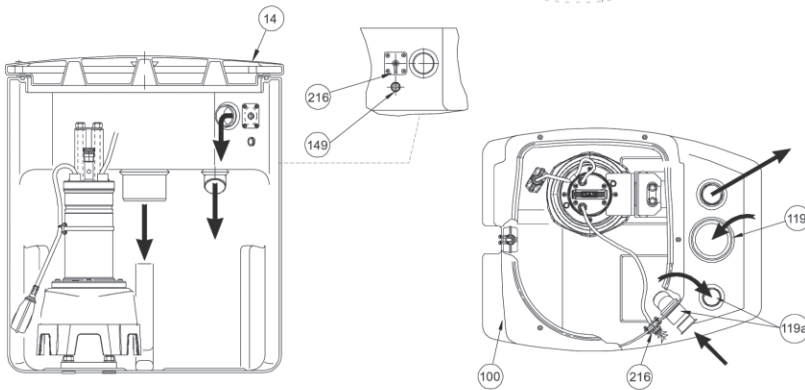
A float cable clamp kit is supplied (clamp fastened to the motor jacket, with height adjustment).

## TECHNICAL DATA

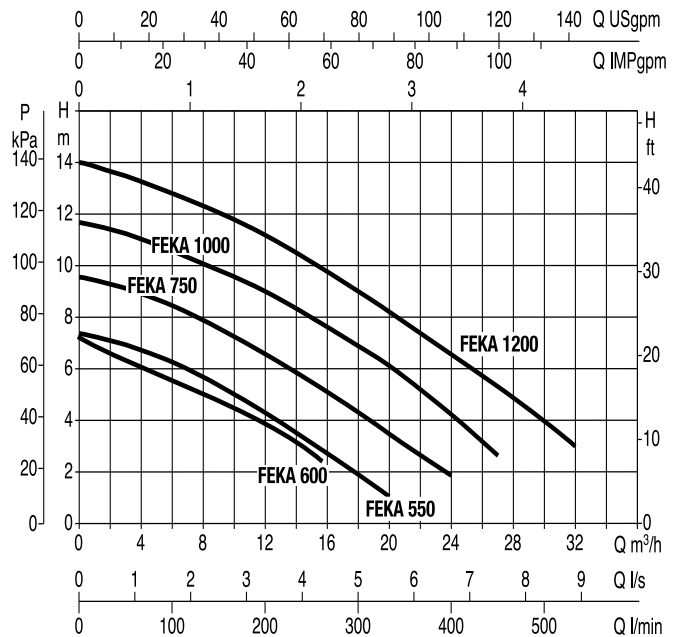
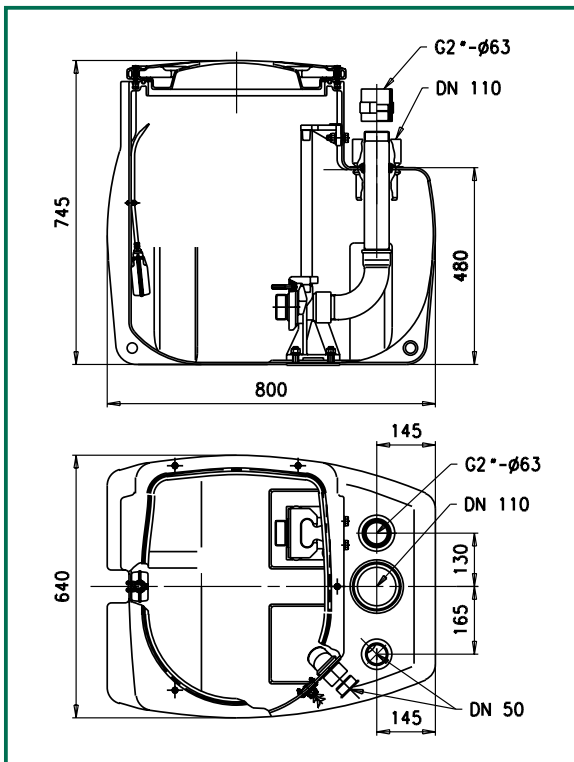
- Operating range: from 1 to 24 m<sup>3</sup>/h with head up to 9 metres
- Liquid temperature range: +50°C



3	ADAPTER 1 1/4" - 2"
5	FIXED PART
14	TANK
83	"ALARM" FLOAT (not supplied)
87	CABLE CLAMP
100	TANK
118	SLEEVE 63X2"
119	UNION DN 110 (inlet)
119a	45° ELBOW DN 50 (inlet - ventilation)
126	OUTLET HOSE CLAMP
139	PUMP
149	CABLE HOLDER PG 11
151	SLIDE MOBILE PART
204	CABLE CLAMP
216	SPECIAL CABLE GLAND
248b	COVER SCREW
267a	TCEI SCREW M10X25 UNI 5931
268	PUMP FLANGE SCREW
315	GUIDE HOSES
316	ANTI-ROTATION BRACKET
319a	CLAMP
397c	M10 NUT



The performance curves are based on the kinematic viscosity values = 1 mm<sup>2</sup>/s and density equal to 1000 Kg/m<sup>3</sup>. Curve tolerance according to ISO 9906.



MODEL	A	B	C	D	D1	E	F	G	H	H1	I	WEIGHT Kg
<b>FEKABOX 280</b>	800	640	145	DN 50	DN 110	165	130	2"	745	480	145	38