

# FEKAFOS 280 DOUBLE

FITTED FOR  
 FEKA 600 NA  
 FEKA VS/VX 550 M-NA/T-NA  
 FEKA VS/VX 750 M-NA/T-NA  
 FEKA VS/VX 1000 M-NA/T-NA  
 FEKA VS/VX 1200 M-NA/T-NA



## GENERAL DATA

### Applications

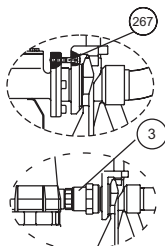
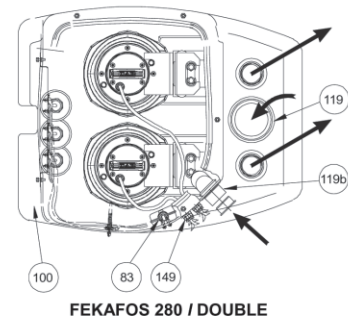
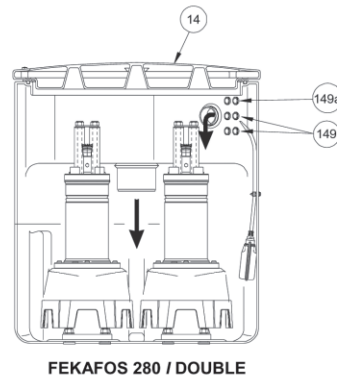
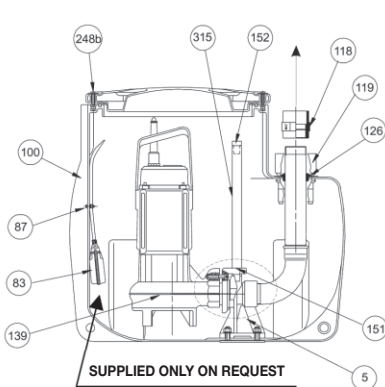
Station for the collecting, automatic lifting and pumping of sewage sludge and household/industrial waste into the drainage system from basement rooms that are below the drainage system.

### Ductile liquids

Ground water, rainwater, clear waste water, black waste water and water from rivers and lakes.

### Constructional characteristics

The FEKAFOS 280 DOUBLE is made of a high density polyethylene tank with an actual capacity of 280 litres, with reinforced cover including seal that guarantees gas and liquid tightness, two DSD-2 devices (to ease pump maintenance) together with supporting feet, sliding guides, tube guide brackets, slide tubes and pipe connector kit for the connection of the pump to the sewerage system. Designed for the functioning of 2 non-automatic electric pumps (see models mentioned above) **to be ordered separately**. Complete with: 3 bulb floats fitted to stainless steel supporting plate, cable holder for the connection of the float and pump cables to the electrical panel (**to be ordered separately according to the table**). Including DN110 liquid inlet manifold and 2" outlet. Including DN50 breather pipe connector. The use of a warning float is available on request.

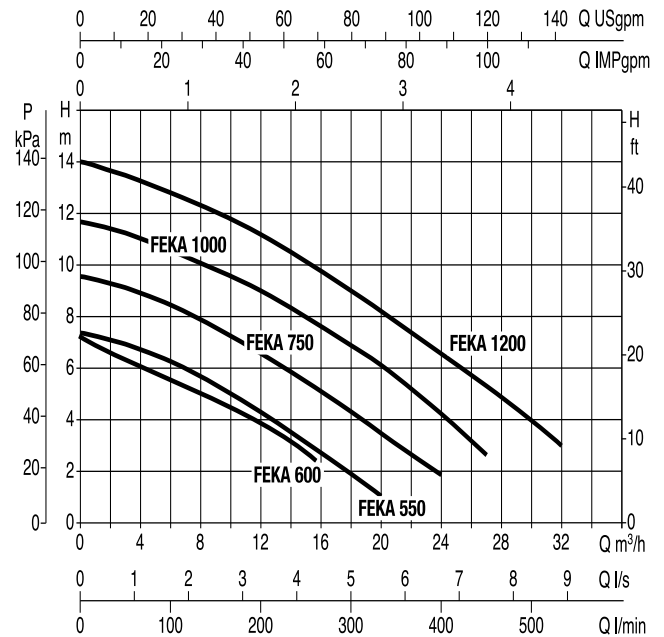
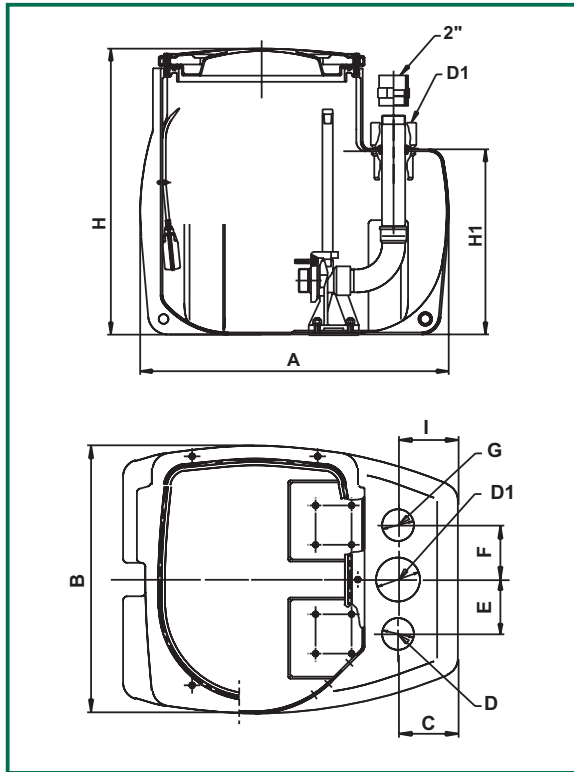


5	FIXED PART	149a	CABLE HOLDER PG 13,5
14	COVER	151	SLIDE MOBILE PART
83	"ALARM" FLOAT (not supplied)	152	FASTENING BRACKET
87	CABLE CLAMP	248b	SCREW COVER
100	TANK	266	TCEI SCREW M10X16
118	SLEEVE 63X2"	267	TCEI SCREW M10X60 UNI 5931
119	UNION DN 110 (inlet)	267a	TCEI SCREW M10X25 UNI 5931
119a	45° ELBOW DN 50 (inlet - ventilation)	268	PUMP FLANGE SCREW
119b	45° ELBOW DN 50 (inlet)	315	GUIDE HOSES
126	OUTLET HOSE CLAMP	316	ANTI-ROTATION BRACKET
139	PUMP	397c	M10 NUT
149	CABLE HOLDER PG 11		

# TECHNICAL DATA

- Operating range: from 1 to 35 m<sup>3</sup>/h with head up to 26,5 metres
- Liquid temperature range: +55°C

The performance curves are based on the kinematic viscosity values = 1 mm<sup>2</sup>/s and density equal to 1000 Kg/m<sup>3</sup>. Curve tolerance according to ISO 9906.



MODEL	A	B	C	D	D1	E	F	G	H	H1	I	WEIGHT Kg
<b>FEKAFOS 280 DOUBLE/...</b>	800	640	145	DN 50	DN 110	130	130	2"	745	480	145	54

## CHOICE OF PUMP/ELECTRICAL PANEL

PUMP MODEL	P2 NOMINAL ELECTRIC PUMP		SINGLE-PHASE 230V~ 50 Hz	THREE-PHASE 400V~ 50 Hz
	kW	HP		
<b>2FEKA 600 NA</b>	0,55	0,75	E2D2,6 M	E2D2 T
<b>2FEKA VS-VX 550 NA</b>	0,55	0,75	E2D 2,6 M	E2D2T
<b>2FEKA VS-VX 750 NA</b>	0,75	1	E2D 2,6 M	E2D2T
<b>2FEKA VS-VX 1000 NA</b>	1	1,36	E2D 2,6 M	E2D3T
<b>2FEKA VS-VX 1200 NA</b>	1,2	1,6	E2D 2,6 M	E2D3T